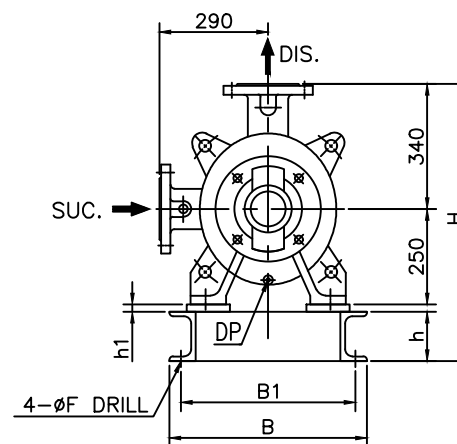
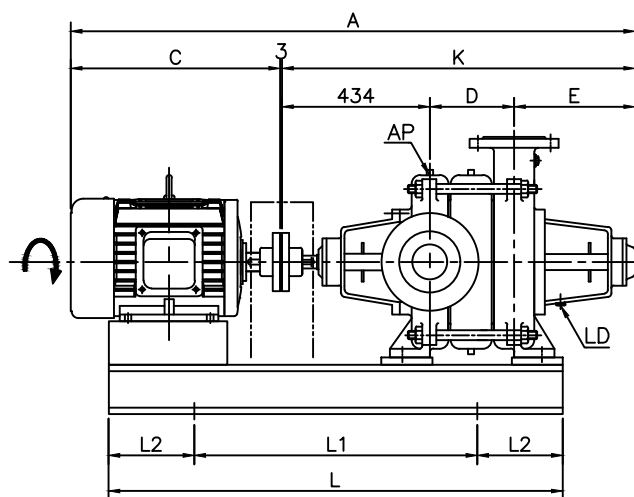
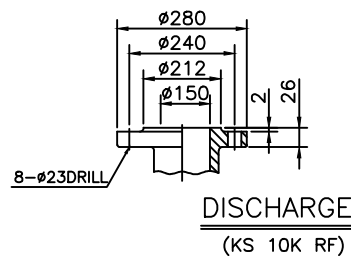
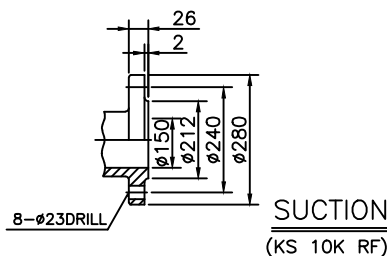


IT. NO.	PART NAME	MATERIAL	Q'TY	REMARKS
101				
102				



													PUMP WEIGHT : kg					APPROX. WEIGHT (kg)		
	NO.	STAGE	HP	A	C	K	D	E	L	L1	L2	B	B1	h	h1	H	øF	MOTOR	BED&ACC	TOTAL
▽	H01	2	DY,효성-40	1808	761	1044	265	345	1350	950	200	450	390	125	0	715	24			
▽	H02		하이젠-40	1780	733	1044	265	345	1400	1000	200	450	390	125	0	715	24			
▽	H03		DY-50,60	1938	891	1044	265	345	1500	1100	200	490	430	125	0	715	24			
▽	H04		효성-50,60	1885	838	1044	265	345	1440	1040	200	490	430	125	0	715	24			
▽	H05		하이젠-50	1885	838	1044	265	345	1440	1040	200	490	430	125	0	715	24			
▽	H06		하이젠-60	1985	938	1044	265	345	1540	1140	200	490	430	125	0	715	24			
▽	H07		하이젠,DY-75	1895	848	1044	265	345	1480	1020	230	520	460	125	0	715	24			
▽	H08		효성-75	1870	823	1044	265	345	1430	970	230	520	460	125	0	715	24			
▽	H09																			
▽	H10																			



NOTE

AP : AIR VENT & PRIMING PT 1/2"
DP : DRAINAGE PLUG PT 1/4"
LD : LEAKAGE DRAIN PT 3/8"

※ 상기 내용은 당사 사정에 의해 변경 될 수 있음.

TYPE DMV 150-2				DWG. NAME OUTLINE DIMENSIONS DWG.			
DRAWN	DESIGNED	CHECKED	APPROVED	THIRD ANGLE PROJECTION	SCALE	1/1	
H.S. Sim	H.S. Sim	H.S. Sim	H.H. Lee	DATE	2019. 07. 24	REF. DWG. NO.	
DY (주)대영파워펌프 DAEYOUNG POWER PUMP				DWG. NO.	DYO-T-AA1907	△	

특정	△
차재	△
주물	△
연사	△
가공	△
가공	△
연사	△
배관	△
배관	△
연사	△
조립	△